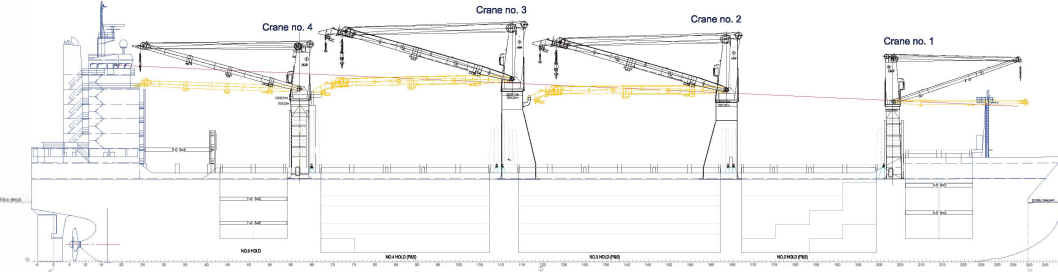


# A-CLASS VESSELS

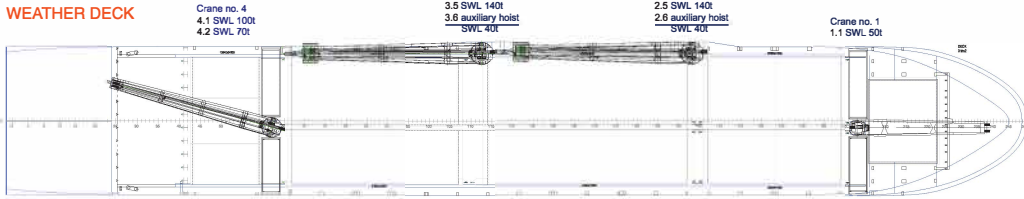
Intake is always subject to vessel's stability, trim, permissible weights and is subject to regulations of visibility. Lifting capacity of vessel's cranes is subject to vessel's stability and can depend on cargo/ballast on board. Container data as well as bale capacity assumes tweendeck ashore. The figures given herewith are for "reference" only and they must not be used as basis for Charter Parties or other contracts without AAL's explicit written authority.

For more information on individual vessels within the AAL fleet, please contact [chartering@aalshipping.com](mailto:chartering@aalshipping.com).

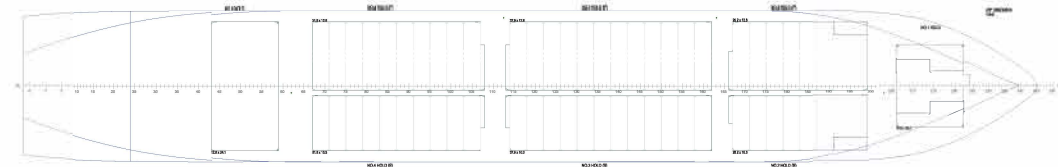
## SIDE VIEW



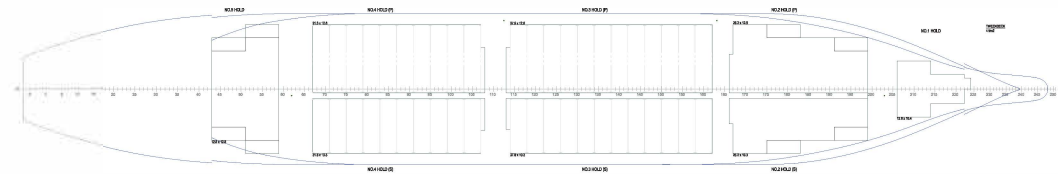
## WEATHER DECK



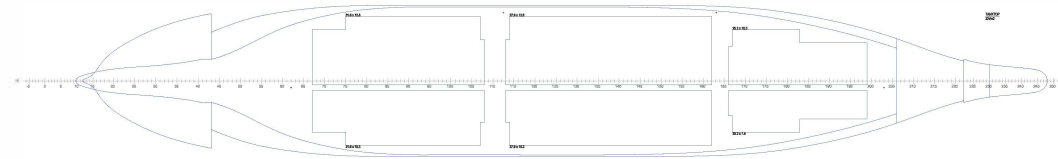
## UPPER TWEENDECK



## LOWER TWEENDECK



## TANK TOP



### Global Head Office

Singapore, SG  
T: +65 6248 3600  
E: [chartering@aalshipping.com](mailto:chartering@aalshipping.com)

### Europe

Hamburg, DE (Regional Hub)  
T: +49 40 36 13 04 505  
E: [chartering@aalshipping.com](mailto:chartering@aalshipping.com)  
Porvoo, FI  
T: +358 40 827 7031  
E: [chartering@aalshipping.com](mailto:chartering@aalshipping.com)  
Paris, FR (Africa Enquiries)  
T: +33 1 4071 8512  
E: [chartering@aalshipping.com](mailto:chartering@aalshipping.com)

### Middle East

Dubai, AE (Regional Hub)  
T: +971 4 450 4700  
E: [chartering@aalshipping.com](mailto:chartering@aalshipping.com)

### Asia

Shanghai, CN  
T: +86 21 6135 9600  
E: [china@aalshipping.com](mailto:china@aalshipping.com)  
Beijing, CN  
T: +86 10 8447 5255  
E: [china@aalshipping.com](mailto:china@aalshipping.com)  
Qingdao, CN  
T: +86 532 8575 3558  
E: [china@aalshipping.com](mailto:china@aalshipping.com)

Tokyo, JP  
T: +81 3 3541 9192  
E: [japan@aalshipping.com](mailto:japan@aalshipping.com)  
Seoul, KR  
T: +82 2 6388 7870  
E: [korea@aalshipping.com](mailto:korea@aalshipping.com)

### Oceania

Brisbane, AU (Regional Hub)  
T: +61 7 3332 8555  
E: [chartering@aalshipping.com](mailto:chartering@aalshipping.com)

### Americas

Houston, US (Regional Hub)  
T: +1 713 980 1100  
E: [chartering@aalshipping.com](mailto:chartering@aalshipping.com)

# A-CLASS VESSELS

v.2/21

<b>Type</b>	Multipurpose Dry Cargo Ship	<b>Holds Capacity / (Volume 100%)</b>	No. 1: 2,135.70 cbm No. 2P: 4,581.30 cbm / No. 2S: 3,572.20 cbm No. 3P: 7,727.20 cbm / No. 3S: 6,218.20 cbm No. 4P: 6,398.70 cbm / No. 4S: 5,141.00 cbm No. 5: 3,732.40 cbm	<b>Auxiliary Engines (3 Sets)</b>	Wartsila Auxpac 975W6L62 975kW at 900 RPM
<b>Class</b>	DNV-GL, 100 A5E; BWB; Equipped for carriage of containers; NAV-O; Strengthened for heavy cargo	<b>Total</b>	39,509.40 cbm	<b>Bow Thruster Rated Power</b>	1,100kW
<b>Deadweight</b>	31,000 t (summer)	<b>Floor Space</b>	Tank Top: 2,315 m <sup>2</sup> Tweendeck: 3,649 m <sup>2</sup> + Additional 873 m <sup>2</sup> of 20/40FT F/L Decks Weather Deck: 2,988 m <sup>2</sup>	<b>Anti-Heeling System</b>	The vessel is equipped with anti-heeling tanks, with an automatic system fully monitored and controlled from the cargo office.
<b>GT/NT</b>	23,930 / 10,947	<b>Max Permissible Load</b>	Weather Deck Hatch Covers: 3.00 t/m <sup>2</sup> Tweendeck Hatch Covers: 4.00 t/m <sup>2</sup> Tank Top: 22.00 t/m <sup>2</sup>	<b>Dehumidifiers / Ventilation</b>	Three independent dehumidifiers serve cargo holds No. 2, 3 and 4 (port and starboard) for the safe transportation of sensitive steel/paper and other products. Ventilation of cargo holds in accordance with requirements for carriage of dangerous cargo.
<b>LOA</b>	193.90 m	<b>Container Capacity (Total TEU)</b>	910 TEU in holds 1109 TEU on deck	<b>Dangerous Cargo</b>	Class 1-9 (excluding 5.2) can be loaded in hold No. 2, in packaged form. Class 1.4(S), 2-9 (excluding 5.2) can be loaded in Holds No. 1, No. 3 and No. 4 in packaged form. Class 1-9 (excluding 5.2) can be loaded on upper deck/ hatch covers (except above E/R) in packaged form. Class 4.1, 4.2, 4.3, 5.1, 6.1(D), 8(D) and 9 can be loaded in bulk in holds No.2, No. 3 and No. 4
<b>LBP</b>	183.00 m	<b>Container Capacity (Total FEU)</b>	922 FEU + 170 TEU	<b>Smoke Detection / Fire Fighting</b>	All cargo holds are equipped with a fire detection system and a CO2 fire extinguishing system. Cargo hold No. 2 (dangerous goods) is additionally equipped with a sprinkler fire extinguishing system.
<b>Breadth (Moulded)</b>	28.20 m	<b>Reefer Containers</b>	145 Reefer Plugs		
<b>Depth (Moulded)</b>	15.60 m	<b>Cargo Gear</b>	Crane No. 1 SWL 50 t 3.0-24.0 m Crane No.2 & 3 SWL 350 t 5.25-14.0 m Crane No.4 SWL 100 t 4.0-24.0 m		
<b>Draft (Summer)</b>	11.20 m	<b>Maximum Lift</b>	Combined 700 t (Crane 2 & 3)		
<b>Holds</b>	5	<b>Main Engine</b>	Wartsila 7RT-flex50 MCR 11,620kW at 124 RPM CSR 10,458kW at 119.7 RPM		
<b>Hatches</b>	8				
<b>Tweendecks</b>	Complete Tweendeck levels for holds 3 & 4 / flexible positions				
<b>Hatch Dimensions (L x B)</b>	No. 1: 12.64 x 15.40 m No. 2P: 25.28 x 12.80 m / No. 2S: 25.28 x 10.30 m No. 3P: 37.92 x 12.80 m / No. 3S: 37.92 x 10.30 m No. 4P: 31.60 x 12.80 m / No. 3S: 31.60 x 10.30 m No. 5: 12.64 x 24.10 m				

VESSEL NAME	AAL BRISBANE	AAL DALIAN	AAL HONG KONG	AAL KEMBLA	AAL KOBE	AAL MELBOURNE	AAL NEWCASTLE	AAL PUSAN	AAL SHANGHAI	AAL SINGAPORE
YEAR BUILT	2010	2013	2013	2011	2012	2013	2014	2012	2012	2011
IMO NO.	9498341	9498470	9498468	9498353	9498444	9498456	9498482	9498389	9498377	9498365
CALL SIGN	D5OI7	D5OJ9	5BUK4	D5OI9	D5OJ7	D5OJ8	D5OK2	D5OJ5	5BUJ4	D5OJ2
FLAG	LIBERIA	LIBERIA	CYPRUS	LIBERIA	LIBERIA	LIBERIA	LIBERIA	LIBERIA	CYPRUS	LIBERIA

Our second-generation A-Class heavy lift vessels accommodate all cargo types with a market leading intake of 40,000 cbm. A few highlights include: a 700 t max lift capability; five large cargo holds; 2 tweendecks and a weather deck floor space of 2,700 m<sup>2</sup> – making it one of the finest, youngest and most popular vessel classes in the global MPV fleet.



chartering@aalshipping.com  
www.aalshipping.com | www.aalshipping.com.cn



WeChat ID: AALSHIPPING  
新加坡澳亚航运有限公司上海代表处



powered by partnerships