

COMPANY & SERVICES



powered by partnerships



CONTENTS

Introduction	05
Overview	07
Service Models	
• Chartering Solutions	09
• Liner Services	11
• Trade Route Services	13
Fleet	15
Cargo	17
End-to-End Operational Control	19
Office Network	21



INTRODUCTION

With a distinguished maritime heritage and over a quarter of a century expertise, AAL has grown into one of the multipurpose sector's most awarded and respected global carriers. We have the capability to transport our customers' project heavy lift, breakbulk, steel, dry bulk and general cargoes to any compass point with the utmost efficiency, frequency and safety.

It is no coincidence that in the past 5 years, AAL has won more global awards for service than any other multipurpose heavy lift carrier, accolades bestowed by the same people with whom we work every day.

As the global market experiences unprecedented challenges, AAL's ethics and brand essence 'powered by partnerships' remain unwavering. Our slogan accurately mirrors the way we strive to do business, building long-term relationships with the market based on respect, service and mutual benefit.

Best Project Cargo Shipping 2015 - 2020
AFLAS Awards

Best Shipping Line 2019
Heavy Lift Awards

Excellence in Bulk & Heavy Lift Handling Commendation 2018
DCN Australian Shipping Awards

Best Logistics 2017
Lloyd's List Asia Pacific Awards

Excellence in Project Cargo Shipping 2016
Australia Shipping Awards

Breakbulk Operator of the Year 2016
Global Freight Awards





OVERVIEW

AAL is not just a leading multipurpose operator, but a sector innovator with numerous firsts in the fields of transport engineering, cargo operations and multipurpose ship design. We have 25 years' experience in providing services that serve the world's most dynamic industries and deliver trusted solutions for their biggest and most demanding billion-dollar projects. Whether employed on a short or long-term basis – with the required vessels, personnel and other resources needed – we understand the importance to all stakeholders of time and cost efficiency and deliver every time.

AAL's growing fleet of specialist multipurpose, heavy lift vessels is one of the sector's youngest and largest. It comprises multiple vessel classes and combines significant cargo intake and economies of scale with exceptional heavy lift capability.

We provide a seamless around the world connectivity for our customers and frequent sailings on the most popular trades. Our offering comprises THREE distinct ocean transport services that can be combined to deliver options for cargoes big and small:

- **Chartering Solutions** deliver tailor-made and competitive tramp options for any cargo type on either a spot, or long-term engagement basis.

- **Liner Services** deliver trusted, scheduled and regular sailings that connect the main ports of Europe, Middle East, India, Asia and Australia.

- **Trade Route Services** provide frequent and regular fixed-route sailings and flexible port calls on popular trades between the Americas, Africa, Europe, Middle East, Asia and Oceania.

Our expanding infrastructure stretches worldwide. With a hand-picked team of multilingual professionals – including best-in-class engineering and operations personnel – we address the 24/7 demands of a global customer base that represents sectors like oil & gas, mining, energy, agriculture, steel, construction, leisure and general cargo.



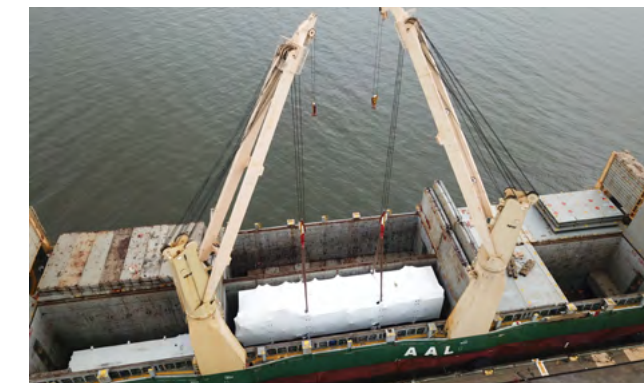
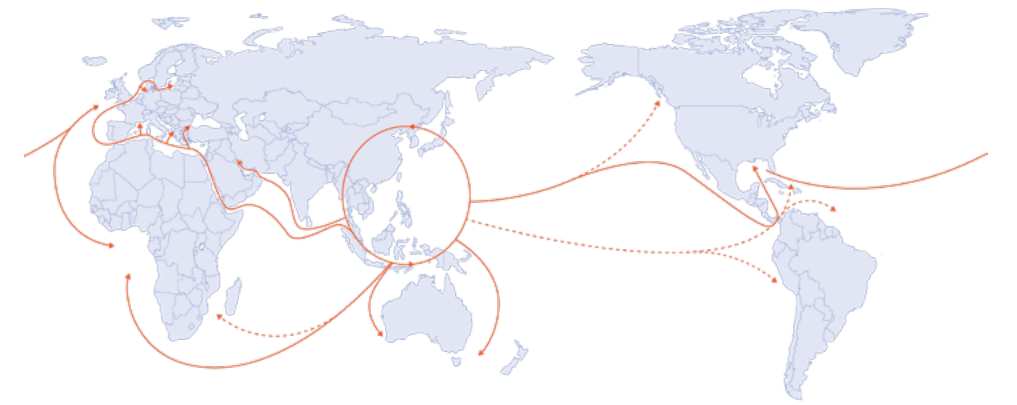


CHARTERING SOLUTIONS

With our mantra, 'any cargo, any port and any direction' firmly in mind, we plan and execute tailor-made and highly competitive tramp Chartering Solutions that connect multiple compass points with the highest levels of cost, safety and time efficiency. This experience, coupled with our cargo handling expertise and fleet of specialist MPVs enables AAL to deliver long-term solutions for multibillion-dollar projects.

Focused on becoming the preferred carrier for large industrial projects around the world, we deploy the multipurpose sector's most unique fleet, with a variety of options available within the niche 'Mega-Size' multipurpose vessel segment (30,000+ dwt) - combining market leading cargo intake and exceptional heavy lift capability.

Powered by a team of top-class chartering professionals and transport engineers, we have expanded our geographic footprint and strengthened our operations network to deliver optimum efficiency and competitive advantage on major trade routes worldwide. Whenever required, we also charter-in additional vessels on either a spot or long-term employment basis, to satisfy specific customer and project demands.





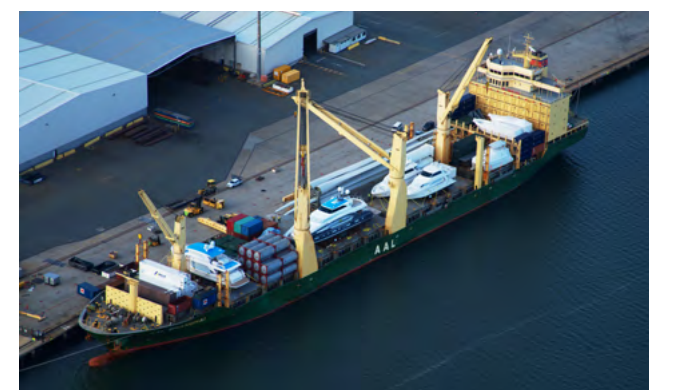
LINER SERVICES

AAL pioneered multipurpose Liner Services in the Asia - Pacific in 1995 and has operated them successfully ever since, linking main ports and shipping hubs on key trades around the world with uncompromising schedule integrity.

Offering scheduled monthly rotations all-year-round, these services are considered the most dependable of their kind and deliver a solution for both large and small cargo parcels across all industry sectors, with all shippers benefiting from economies of scale on every sailing.

Servicing all manner of project heavy lift, breakbulk, dry bulk, steel and general cargo demands – large & small – our Liner Services harness AAL's highly flexible MPV fleet and around-the-clock support local language support from our regional offices conveniently located in the busiest shipping hubs. Our Liner Services currently comprise:

- Europe – Middle East / India – Asia (Europe Service)
- Asia – East Coast Australia (AUEC Service)
- Asia – West Coast Australia (AUWC Service)





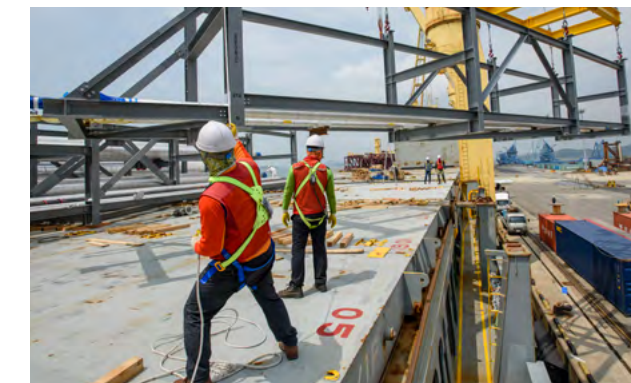
TRADE ROUTE SERVICES

AAL has extensive experience in establishing and running fixed trade lane operations that complement our existing services, to offer customers a regular and seamless 'around-the-world' connectivity for their shipping requirements. These operations combine regular fixed-route sailings on key global trade lanes with flexible port calls and include:

- Asia – Americas Trade Route
- Asia – Europe Trade Route
- Atlantic Trade Routes
- Intra – Asia Trade Route

Our extensive liner experience enables us to put together voyages that can carry large and small parcels of practically any cargo type – side by side. This, in turn, allows our customer cargoes to be transported faster and with significant economies of scale.

We support these services with the optimum size of multipurpose heavy lift vessel and capacity required to meet our customer cargo demands, accommodating project heavy lift and breakbulk cargo, steel and dry bulk commodities at the same time. They are operated by an award-winning team of chartering professionals whose number one priority is the safe and efficient handling of cargo - not matter how large or small.





FLEET

AAL was instrumental in designing and building our popular next generation multipurpose heavy lift vessels. Our knowledge of the sector and its cargo make-up is reflected in their superior design and integral to meeting the demands of the market. We harness this expertise and customer focus in the selection of all the ships in our fleet.

The fleet is one of the sector's largest and youngest. It comprises multiple vessel sizes with flexibility in design, configuration and equipment to carry any cargo type: – breakbulk, project heavy lift, dry bulk commodities, containers and general cargo and all at the same time.

Today, AAL is in pole position within the 'Mega-Size' multipurpose vessel segment, offering leading cargo intake, significant economies of scale and exceptional heavy-lift capability (max 700 mt). Our fleet comprises the following vessel classes (in order of DWT), as well as additional tonnage chartered-in to accommodate customer demand:

S-Class MPVs (19,000 dwt) Designed to go anywhere and with any cargo, this class of heavy - lifter combines a 700mt max lift with three spacious holds, flexible tweendecks and large weather deck. The S-Class vessels ably serve our customers worldwide with optimum efficiency and performance.

G-Class MPVs (25,800 dwt) Another flexible vessel class, with multiple configurations for all cargo types and a combined max lifting of 240 mt. These tween-deckers are young and feature four large hatch-covered holds, a weather deck space of 2,700 m2 and significant cargo intake of 36,000 cbm.

A-Class MPVs (31,000 dwt) These second-generation heavy lift vessels accommodate all cargo types with a copious intake of 40,000 cbm. In combination with a 700 mt max lift, five large cargo holds, 2 flexible tweendecks and a 2,700 m2 weather deck, the A-Class is one of the most popular and versatile multipurpose vessels in the sector.

W-Class MPVs (33,000 dwt) These extremely large vessels complement our fleet perfectly with their ability to accommodate multiple cargo types simultaneously. Their extreme size ably serves our project and bulk cargo customers with five cargo holds - three with tweendecks - and significant cargo intake of 39,000 cbm.





CARGO

We 'carry it all' for our customers – a huge variety of cargo types and a wide cross-section of industry sectors that they represent. We pride ourselves on providing the market with superior cutting-edge solutions and a competitive advantage in the ocean transportation of breakbulk and multipurpose cargo whether large and heavy, or small and compact.

- Project Heavy Lift Cargo
- Wind Energy Components
- Breakbulk and Unitised Cargo
- Steel
- Earthmoving Equipment and Rolling Stock
- Yachts, Barges and other Floating Cargo
- Dry Bulk Commodities
- Containers and General Cargo

Loading, stowing and discharging high value cargo is a complex operation requiring technical expertise and specialised equipment. The combination of our extensive years' of experience in the sector and the flexibility of our heavy lift multipurpose fleet allows us to deliver solutions and value for a very broad range of cargo types.

To ensure our shipper cargoes are always handled safely and efficiently, we have invested extensively in lifting and lashing equipment for all our vessels and the world's finest training for our engineers, operations teams and crew.

At the point of loading and discharge, we employ experienced cargo superintendents to supervise complex operations and to help maintain performance and operational integrity throughout.





END-TO-END OPERATIONAL CONTROL

Chartering & Commercial

Our international Chartering and Commercial Teams work locally with customers to schedule and plan each shipment and provide a 24/7 key account management, multilingual support and transparency throughout every cargo shipment lifecycle.

Operations

Each sailing is monitored closely by our Operations Department. The problem-solving and project management expertise that the team delivers is essential to optimising sailing efficiencies. The state-of-the-art systems and procedures used are accredited to latest ISO standards.

Engineering

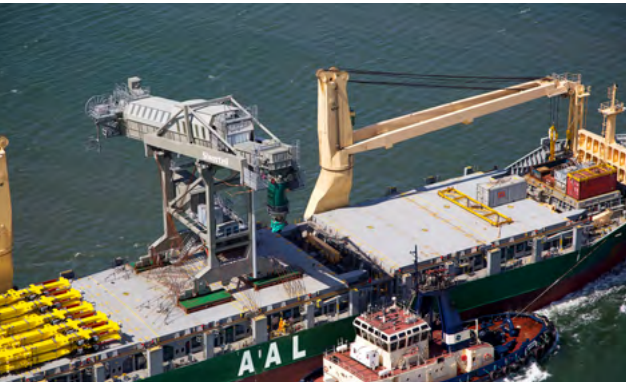
Executing heavy lift cargo operations can take takes months of planning and success hinges upon the smallest detail. Our in-house Engineers are responsible for designing every loading, stowage and discharge operation we undertake. It is their innovation that has helped to push boundaries and achieve numerous firsts for AAL.

Crewing

The Masters and Officers that serve our fleet comprise some of the most experienced in the sector and are committed to following their voyage instructions, whilst adhering to a strict 'zero harm, zero damage' policy. Our Crews are recruited by the world's top crew managers and benefit from comprehensive and ongoing training.

Sailings Optimisation & Cargo Safety

AAL's 'Performance Optimisation Control Room (POCR)' function is a 24/7 digital online service, designed to improve all aspects of its fleet's navigational, operational and commercial performance - ultimately delivering safer and more profitable sailings. Real-time transparency and deeper insights enable AAL to better deal with fast-changing scenarios and potentially hazardous developments as they happen and directly impacts crew welfare, cargo safety and overall sailings efficiency.





OFFICE NETWORK

GLOBAL HEAD OFFICE

Singapore, SG
T: +65 6248 3600
E: chartering@aalshipping.com

ASIA

Shanghai, CN
T: +86 21 6135 9600
E: china@aalshipping.com

Beijing, CN
T: +86 10 8447 5255
E: china@aalshipping.com

Qingdao, CN
T: +86 532 8575 3558
E: china@aalshipping.com

Tokyo, JP
T: +81 3 3541 9192
E: japan@aalshipping.com

Seoul, KR
T: +82 2 6388 7870
E: korea@aalshipping.com

EUROPE

Hamburg, DE (Regional Hub)
T: +49 40 361 304 505
E: chartering@aalshipping.com

Porvoo, FI
T: +358 40 82 77031
E: chartering@aalshipping.com

Paris, FR (Africa Enquiries)
T: +33 1 4071 8512
E: chartering@aalshipping.com

OCEANIA

Brisbane, AU (Regional Hub)
T: +61 7 3332 8555
E: chartering@aalshipping.com

AMERICAS

Houston, US (Regional Hub)
T: +1 713 980 1100
E: chartering@aalshipping.com

MIDDLE EAST

Dubai, AE (Regional Hub)
T: +971 4 450 4700
E: chartering@aalshipping.com

For all your general and cargo enquires, please contact chartering@aalshipping.com



For a PDF version of this brochure, visit www.aalshipping.com

WeChat ID: AALSHIPPING
新加坡澳亚航运有限公司上海代表处



www.aalshipping.com
www.aalshipping.com.cn

